

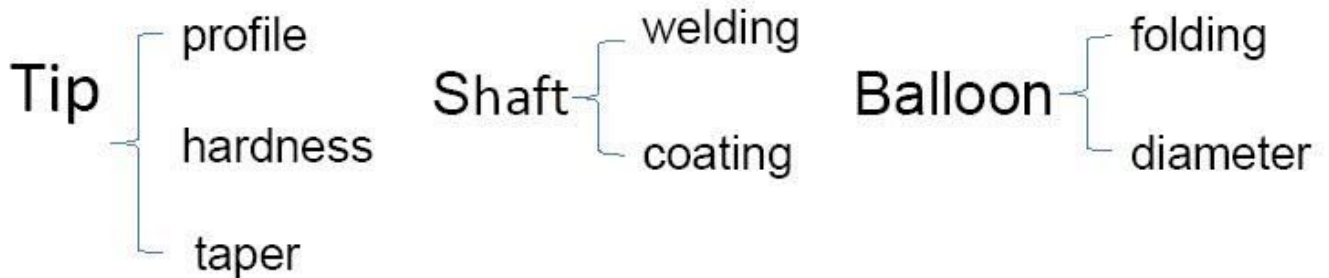
MSM® PTCA Balloon

Technical Sheet

Design	Rapid Exchange
Material	Proprietary polyamide compound
Balloon compliance	Semi-compliant
Marker	Embedded Platinum/Iridium
Distal shaft (outer diameter)	2.8F (0.93 mm)
Proximal shaft (outer diameter)	1.9F (0.63 mm)
Usable catheter length	138 cm
Lowest crossing profile	0.025" (0.63mm)
Nominal inflation pressure	8atm
Minimum guiding catheter compatibility	5Fr / 0.056"
Guidewire compatible	0.014" (0.36mm)

Crossability

is one of the most important factor of PTCA Balloon catheter nowadays.



Tip Diameter Comparison

	MSM PTCA + DEB Coro	Tazuna® -Terumo	Emerge™ - Boston	Fire Star® - Cordis
Average (mm)	0.43	0.46	0.44	0.49

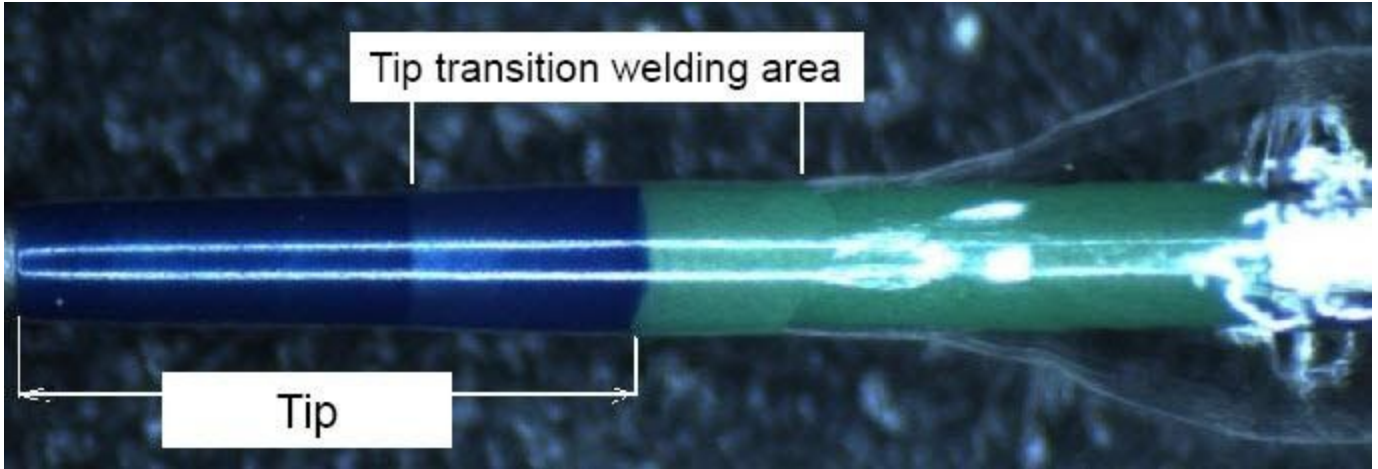


Tip Hardness Comparison

	MSM PTCA + DEB Coro	Maverick™	Fire Star™
Average (g)	19.055	14.187	33.035

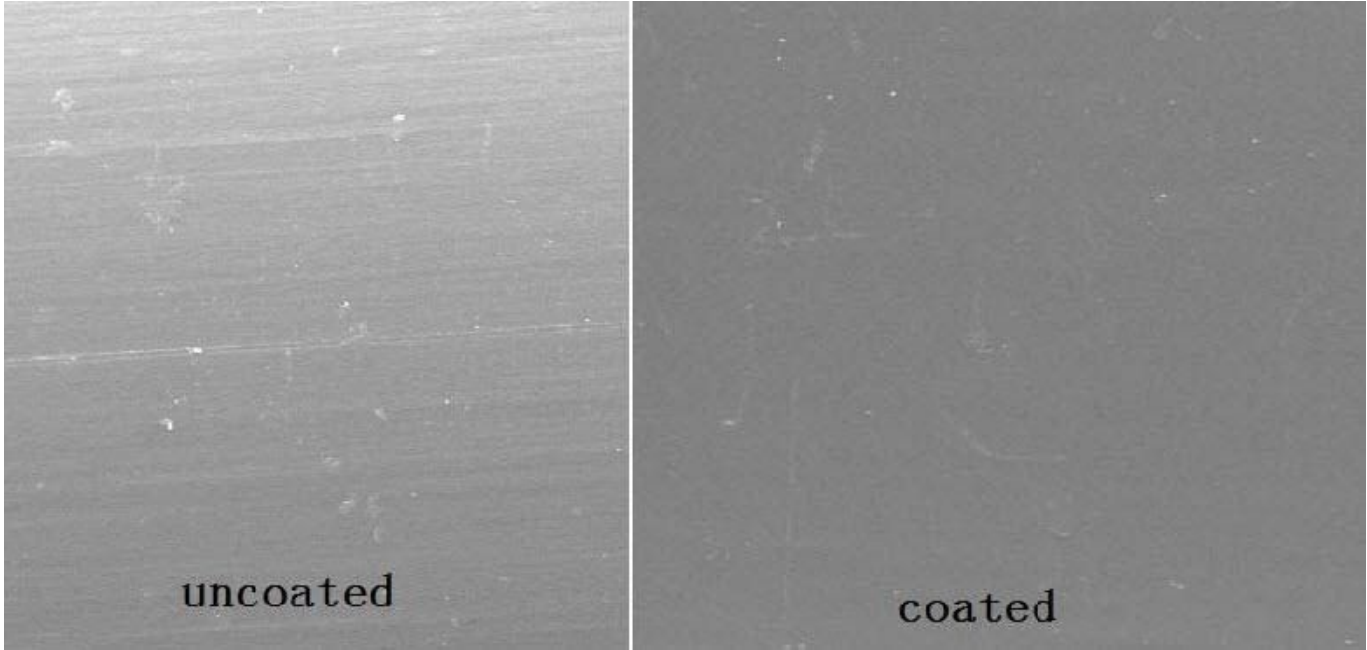


Excellent welding technique guarantees the smooth transmission



enhanced deliverability and pushability

Hydrophilic coating



pictures were taken by electron microscope

Stability of hydrophilic coating improved safety

	MSM PTCA + DEB Coro	Maverick® -- Boston	Fire Star™ -- Cordis
stirring times	≥150	≤30	≥100

Hydrophilic coating:

In the environment of simulated human body fluid, the hydrophilic coating on the distal shaft remain stable after up to 150 times of stirring, shows superior stability of the hydrophilic coating.

Three-directional memory folding



Reduce the size of the balloon and ensure the excellent withdrawability

Technical Details Catheter

Usable length		138 cm
Length of the guide wire lumen		27 cm
Material	Balloon	Polyamide-Compound
	Distal shaft	Polyamide, multi layer tube hydrophilic coated
	Proximal shaft	Stainless Steel, PTFE coated
Shaft size	Proximal	1.9 F
	Distal	2.8 F
Balloon fold	All sizes	3-fold
Marker bands		Embedded Platinum/Iridium marker
Tip profile		0.017" (0.43 mm)
Max. recommended guide wire		0.014" (0.36 mm)

Compliance Data

Compliance Tabelle								
Pressure [MPa / bar]	Balloon diameter nominal [mm]							
	1,50	2,00	2,25	2,50	2,75	3,00	3,50	4,00
0,6 / 6	1,45	1,91	2,15	2,43	2,67	2,93	3,41	3,88
0,7 / 7	1,48	1,95	2,20	2,47	2,71	2,97	3,45	3,94
0,8 / 8	1,50	2,00	2,25	2,50	2,75	3,00	3,50	4,00
0,9 / 9	1,52	2,05	2,30	2,53	2,79	3,03	3,55	4,06
1,0 / 10	1,55	2,09	2,35	2,57	2,83	3,07	3,59	4,12
1,1 / 11	1,57	2,14	2,40	2,60	2,87	3,10	3,64	4,18
1,2 / 12	1,59	2,18	2,45	2,63	2,91	3,14	3,68	4,24
1,3 / 13	1,62	2,23	2,50	2,67	2,94	3,17	3,73	4,29
1,4 / 14	1,64	2,27	2,54	2,70	2,98	3,20	3,77	4,35
1,5 / 15	1,66	2,32	2,59	2,73	3,02	3,24	3,82	4,41
1,6 / 16	1,68	2,37	2,64	2,77	3,06	3,27	3,87	4,47
1,7 / 17	1,71	2,41	2,69	2,80	3,10	3,31	3,91	-
1,8 / 18	1,73	2,46	2,74	2,83	3,14	3,34	-	-
1,9 / 19	1,75	2,50	2,79	2,87	3,18	-	-	-
2,0 / 20	1,78	2,55	2,84	2,90	-	-	-	-
Nominal pressure 0,8 MPa (8 bar)								
RBP Rated Burst Pressure								

Order Information

Balloon length [mm]	10	15	20	25	30	40
Balloon Ø mm						
1,50	BC15010	BC15015	BC15020	BC15025	BC15030	-
2,00	BC20010	BC20015	BC20020	BC20025	BC20030	-
2,25	BC22510	BC22515	BC22520	BC22525	BC22530	BC22540
2,50	BC25010	BC25015	BC25020	BC25025	BC25030	BC25040
2,75	BC27510	BC27515	BC27520	BC27525	BC27530	BC27540
3,00	BC30010	BC30015	BC30020	BC30025	BC30030	BC30040
3,50	BC35010	BC35015	BC35020	BC35025	BC35030	BC35040
4,00	BC40010	BC40015	BC40020	BC40025	BC40030	BC40040