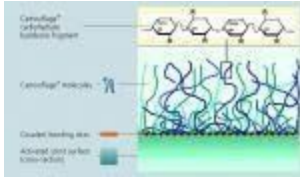
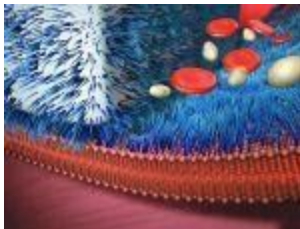


MSM® CIS CoCr Nano

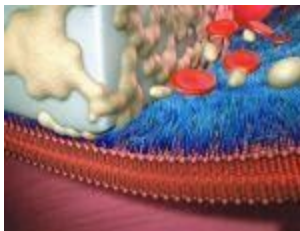
Cobalt Chromium Implant System - Stent surface with Glycocalyx Bio-Coating



The molecule



Glycocalyx coated Stent



BMS Stent not coated

Benefits and advantages of the stent

- **Struts:**
Extremely thin just 65µm for an optimal flexibility and vessel adaption
- **Surface:**
Smooth hemodynamic with perfectly rounded edges to reduce vessel wall reaction. This is achieved by a specific electropolishing process
- **Design:**
Open cell structure - optimized for each vessel diameter - enables an easy side branch access and leads to a perfect flexibility in tortuous vessel anatomy The 9 crown design leads to an optimal lumen coverage and vessel wall adaption



The Glycocalyx Bio-coating

- Permanent, antithrombogenic
- Full biocompatible
- Promotes the healing process
- Promotes endothelialization
- Guaranteed long term stability

The delivery system

- Hydrophilic coated distal shaft 1.9F shaft with a rapid deflation balloon
- The balloon design optimizes a controlled linear expansion
- A balloon overhang of <5 mm minimises vessel injury outside the stent

Technical Details Stent

Type of design	open cell design with 3 interlinks per segment
Design details	9 crown per segment
Material	Cobalt-Chromium L605
Size Range	2.25 mm - 4.00 mm
Strut thickness	0.0026" (65µm)
Strut width (Main segment)	0.0028" (72µm)
Strut width (interlink)	0.0023" (58µm)
Shortening after expansion	< 2%
Recoil	< 5%
Metal coverage	< 18%
Sirolimus Matrix Thickness	3-5 µm
Guiding Catheter compatibility	5 F

Technical Details Catheter

Usable length		138 cm
Length of the guide wire lumen		27 cm
	Material	Balloon
	Distal shaft	Polyamide, Multi layer tubing
Proximal shaft	Stainless Steel with PTFE Coating	
	Shaft size	Proximal
Distal	2.5 F - 2.9 F, depending on balloon size	
	Balloon folding	Balloon sizes 2.25 mm bis 2.5 mm
Balloon sizes 2.75 mm to 4.50 mm	4-fold balloon	
Marker		Embedded Platinum/ Iridium Marker
Tip profile		0.017" (0.43 mm)
Max. recommended guide wire		0.014" (0.36 mm)

Order Information

Stent length									
STENT INNER-Ø mm	8 mm	10 mm	13 mm	16 mm	18 mm	23 mm	28 mm	33 mm	38 mm
2.25	CISN 225/08	CISN 225/10	CISN 225/13	CISN 225/16	CISN 225/18	CISN 225/23	-	-	-
2.50	CISN 250/08	CISN 250/10	CISN 250/13	CISN 250/16	CISN 250/18	CISN 250/23	CISN 250/28	-	-
2.75	CISN 275/08	CISN 275/10	CISN 275/13	CISN 275/16	CISN 275/18	CISN 275/23	CISN 275/28	CISN 275/33	-
3.00	CISN 300/08	CISN 300/10	CISN 300/13	CISN 300/16	CISN 300/18	CISN 300/23	CISN 300/28	CISN 300/33	CISN 300/38
3.25	CISN 325/08	CISN 325/10	CISN 325/13	CISN 325/16	CISN 325/18	CISN 325/23	CISN 325/28	CISN 325/33	CISN 325/38
3.50	CISN 350/08	CISN 350/10	CISN 350/13	CISN 350/16	CISN 350/18	CISN 350/23	CISN 350/28	CISN 350/33	CISN 350/38
4.00	CISN 400/08	CISN 400/10	CISN 400/13	CISN 400/16	CISN 400/18	CISN 400/23	CISN 400/28	CISN 400/33	CISN 400/38