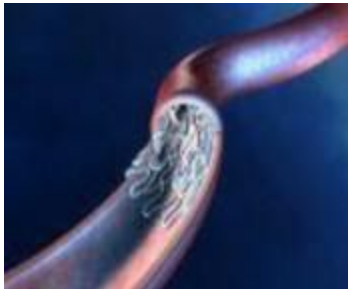


# MSM® CIS CoCr

Cobalt Chromium - Coronary Implant System (BMS Stent)



Flexible design



Perfect vessel adaption

- Excellent flexibility without compromising radial strength.
- Reduced strut thickness in the connecting segments increases flexibility and allows placement in even tortuous vessels. The expanded stent adapts superbly to the vascular anatomy.
- Perfect vessel adaption

## Advantages of the Stent

- **Struts:**  
65µm improves the flexibility and reduces restenosis
- **Surface:**  
Smooth hemodynamic Perfectly rounded edges lead to a reduced vessel wall reaction
- **Design:**  
Open-cell structure, optimized vessel diameter, easy side branch access.  
Coaxial connected interlinks, 9crown design for optimal vessel adaption and lumen coverage.



## Technical Details Stent

Type of design	open cell design with 3 interlinks per segment
Design details	9 crown per segment
Material	Cobalt-Chromium L605
Size Range	2.25 mm - 4.00 mm
Strut thickness	0.0026" ( 65µm )
Strut width (Main segment)	0.0028" ( 72µm )
Strut width (interlink)	0.0023" ( 58µm )
Shortening after expansion	< 2%
Recoil	< 5%
Metal coverage	< 18%
Sirolimus Matrix Thickness	3-5 µm
Guiding Catheter compatibility	5 F

## Technical Details Catheter

Usable length		138 cm
Length of the guide wire lumen		27 cm
	Material	Balloon
	Distal shaft	Polyamide, Multi layer tubing
Proximal shaft	Stainless Steel with PTFE Coating	
	Shaft size	Proximal
Distal	2.5 F - 2.9 F, depending on balloon size	
	Balloon folding	Balloon sizes 2.25 mm bis 2.5 mm
Balloon sizes 2.75 mm to 4.50 mm	4-fold balloon	
Marker		Embedded Platinum/ Iridium Marker
Tip profile		0.017" (0.43 mm)
Max. recommended guide wire		0.014" (0.36 mm)

## Order Information

STENT LENGTH									
STENT INNER Ø	8 mm	10 mm	13 mm	16 mm	18 mm	23 mm	28 mm	33 mm	38 mm
2.25 mm	CISC 225/ 08	CISC 225/ 10	CISC 225/ 13	CISC 225/ 16	CISC 225/ 18	CISC 225/ 23	-	-	-
2.50 mm	CISC 250/ 08	CISC 250/ 10	CISC 250/ 13	CISC 250/ 16	CISC 250/ 18	CISC 250/ 23	CISC 250/ 28	-	-
2.75 mm	CISC 275/ 08	CISC 275/ 10	CISC 275/ 13	CISC 275/ 16	CISC 275/ 18	CISC 275/ 23	CISC 275/ 28	CISC 275/ 33	-
3.00 mm	CISC 300/ 08	CISC 300/ 10	CISC 300/ 13	CISC 300/ 16	CISC 300/ 18	CISC 300/ 23	CISC 300/ 28	CISC 300/ 33	CISC 300/ 38
3.25 mm	CISC 325/ 08	CISC 325/ 10	CISC 325/ 13	CISC 325/ 16	CISC 325/ 18	CISC 325/ 23	CISC 325/ 28	CISC 325/ 33	CISC 325/ 38
3.50 mm	CISC 350/ 08	CISC 350/ 10	CISC 350/ 13	CISC 350/ 16	CISC 350/ 18	CISC 350/ 23	CISC 350/ 28	CISC 350/ 33	CISC 350/ 38
4.00 mm	CISC 400/ 08	CISC 400/ 10	CISC 400/ 13	CISC 400/ 16	CISC 400/ 18	CISC 400/ 23	CISC 400/ 28	CISC 400/ 33	CISC 400/ 38